



PRAIRIE VIEW ELEMENTARY SCHOOL

FAQS FOR THE 2022-23 SCHOOL YEAR

How will I find out who my child's teacher is?

We know how exciting it is to hear from your teacher!

- You will be notified via email or phone call prior to Open House.
- If you have not heard who your child's teacher is by Open House, please contact the school office on that morning and that information will be provided for you!

What will Open House look like and will I get to meet my child's teacher?

Students will have the opportunity to meet their teacher and drop off their school supplies. This is always an exciting time!

Super important: Parents will need to pick up their child's packet from their teacher. It will include:

- 1) rearview mirror dismissal tags that all families need even if students are not car riders. Tags **will** be used for Bronco Club or in case your child needs to be a car rider, etc. Every family will be assigned a number
- 2) a "first day of school" sticker. **Since parents are not allowed into school the first day, this sticker will help staff get each student to their classroom.** This sticker will have the student's name, grade, teacher, and how they are going home the first day of school
- 3) school forms and information

In order to help with traffic/parking, Open house will be on **Tuesday, August 16th** at the following times based on last names:

A-H 2:00-2:45
I-P 3:00-3:45
Q-Z 4:00-4:45
Make-up 5:00-5:45

What are the school day hours?

- Doors open at 7:15am
- First bell rings at 7:30am
- Students are tardy at 7:40am
- School dismisses at 2:35pm

What should we expect on the first day of school?

*For safety purposes, we will continue to follow the same process as in previous years:

THURSDAY, AUGUST 18th

- Family good-byes will need to be done outside. Students will then enter the building and go straight to their morning location.
- No visitors/parents will be able to walk their child to their classroom. Student drop off only.
- There will be teachers and staff located all over the building to help students get to where they need to go.
- Students will need to be wearing their “first day of school sticker” that will be picked up at Open House. This will help staff direct students to their classroom.

What are the procedures for morning drop-off?

- Bus riders will drop off in the front parking lot.
- Car riders will drop off in the east parking lot. This is drop off only. No parents/visitors can enter the building from this location. Please stay off cell phones while in the car drop off loop and have your child ready to exit the car.

NEW FOR 2022-2023 SCHOOL YEAR: We will have 2 lines in our car drop-off loop. This will look similar to the 2 lines during car pick-up. There will be orange cones and staff members to help with traffic control.

REMINDER: 59th Street is now RIGHT TURN ONLY into our Car Rider drop off area during arrival/dismissal times.

- PK- will drop off on the west side of the building.
- Functional Skills will drop off on the west side of the building.
- We are limiting visitors in the building. If you need to drop off medication or need help from the office, you will park in the front parking lot and access the office from there.

Where will students go each morning when they report to school?

7:15 - 7:25am

- Kindergarten, 1st and 3rd graders will report to the gym. They will sit with their class and each class will be spread out from others.
- 2nd and 4th graders will report to their halls and wait outside of their classrooms. Students will have supervision.

7:25 - 7:30am All students will proceed to their classrooms.

7:40am Students are counted tardy.

What will the procedure be for afternoon dismissal?

Students have been divided based on their grade level or dismissal type. This reduces the number of students in one location. We use the dismissal program, SafeID Car Rider Plus. All students will have a numbered backpack tag to ensure student safety.

- Bus riders will dismiss at the front of the building and will be escorted to their bus.
- Walkers will be dismissed from the east side of the building or north side of the building, depending on what their address is.
- Car Riders will be dismissed from the east side of the building:
 - Kindergarten - 4th Grade will be dismissed from the east side of the building.
 - PK- will dismiss from the west side of the building.
 - Functional Skills will be dismissed from the west side of the building.
 - Pick up vehicles will have a hanging rear view mirror tag with numbers that match their students backpack tag. The hanging tag will be picked up at Open House and the backpack tags will be put on the first day of school. Students will go out to their car and will be checked off by our system.
- Bronco Club students will report to the gym.
- Daycare students will be dismissed from the west side of the building.
- To ensure safety for all, parents will not be allowed to walk up to the building to pick their child up after school.
- Any time your child is to go home differently than the teacher has been told, the office must be notified.

What are the prices for breakfast and lunch?

Over the past two years, all students have received free school meals due to USDA federal waivers. Unfortunately, these federal waivers have expired. Mustang Public Schools is encouraging all families to complete a free and reduced meal application this year. It is more important now than ever before.

Application is found @ [School Lunch App](#)

Meal Prices for 2022-23

- Student Breakfast - \$2.25 all sites
 - Breakfast time for all PV students is 7:15am-7:35am
- Student Lunch at Elementary Schools - \$3.25

What do I do if I need to check my student out from school?

To check out your student:

- Sign student out at the office before 2:20pm
- Must have valid ID
- Wait in designated area for student to come to you

How will school supplies be used?

Students will bring their own supplies and we will minimize all sharing of materials as much as possible. Please **LABEL** your child's school supplies with his/her name.

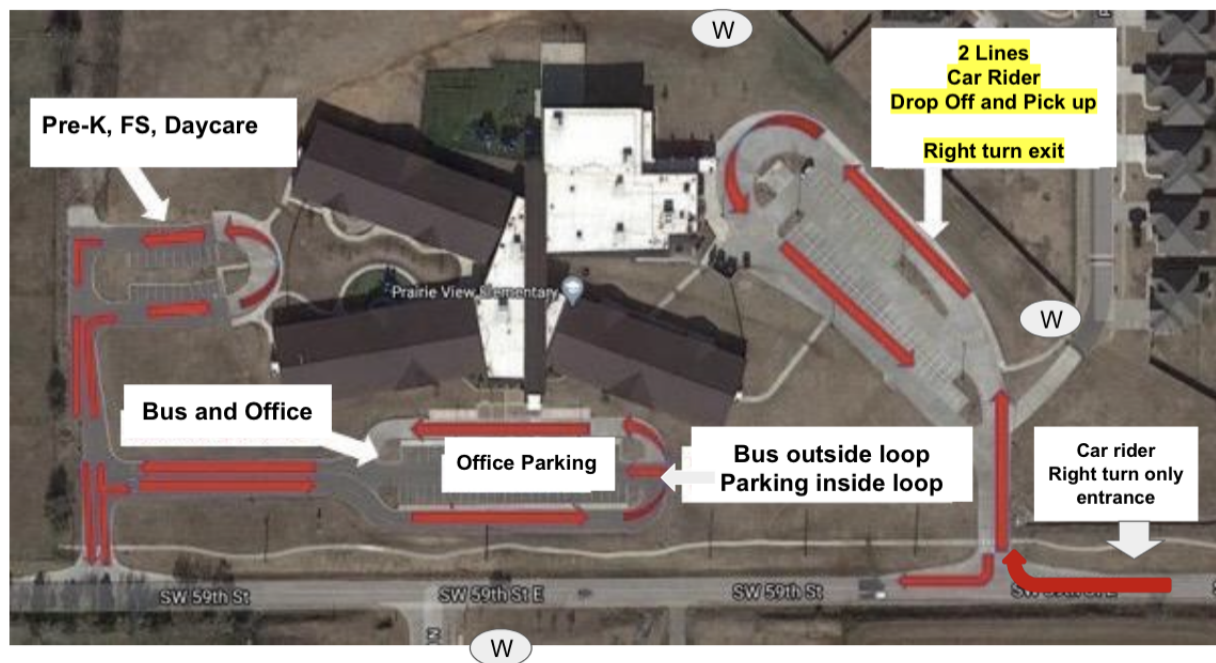
Will students be able to have snacks at school?

Yes, students must bring their own snacks. There will be no classroom snack or snack bags. There will be no shared snacks. Teachers will not be providing snacks for students who do not bring their own.

What Essentials classes will my child attend at Prairie View?

These classes are very important for our students! Music, PE, Art, Library/Media Lab and...this year, we have added STEM to our essentials rotation in all grade levels! This will reduce the number of students in each class.

Arrival and Dismissal Map



 We have 3 waiting areas for parents of students who walk home after school.